

DEEP  
KNOWLEDGE

# DEEP SEA HARVESTING

Make a clean catch

ODIM

▶ ODIM is an international technology group that develops automated handling solutions for the offshore, naval and power generation sectors. Within these markets, the group has a leading position in specialty segments such as Seismic, Subsea, Offshore Supply and Defense. ODIM is also a significant actor in the Deepwater Installation and Nuclear Power sectors.

▶▶ ODIM electric winches reduce your cost during trawling.

# more efficient catch systems

▶▶ Global demand for seafood is rising, but commercial fishing remains a challenging business. To succeed, the industry must increase capture **efficiency, minimise costs** and contribute to **sustainable** fishing.

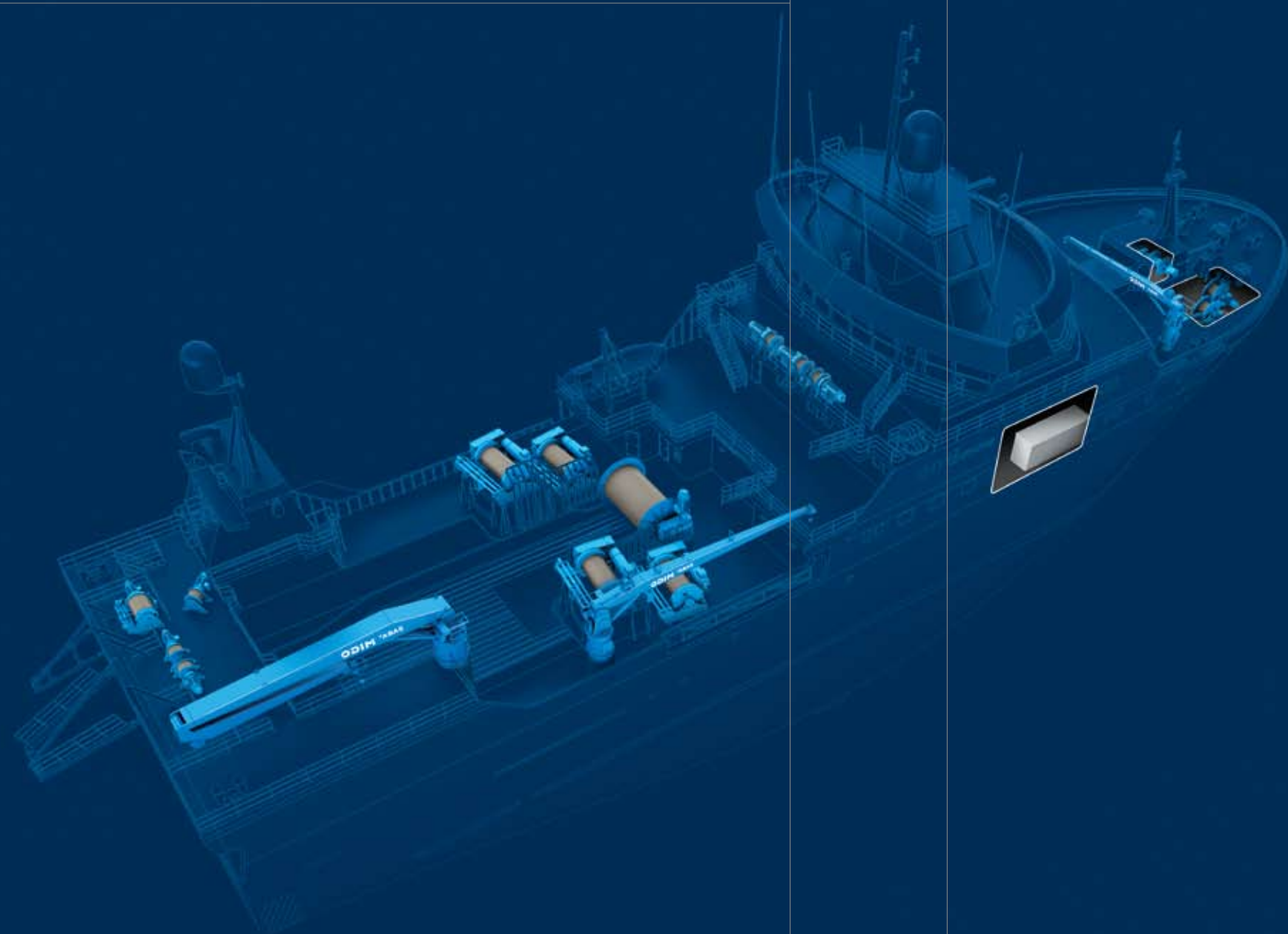
ODIM Deep Sea Harvesting provides lightweight, reliable, electric-driven **catch systems** for mid-water and bottom trawling. We combine extensive experience with a tradition of innovation, having introduced **electric winches** to the fishing industry.

Now, as part of the ODIM industrial technology group, we have a **global presence**, serving customers in every continent. ODIM Deep Sea Harvesting is well positioned to provide high quality and **complete** systems for commercial fishing, now and in the future.

# Full control of catch operations

ODIM Deep Sea Harvesting supplies fully integrated, electric-driven catch systems that are designed for maximum operational efficiency and minimal usage of resources. They include a full range of winches, integrated with ODIM ABAS™ cranes and managed through cutting-edge ODIM control systems.

ODIM pioneered AC-driven winches for the trawler industry. Today, we remain the leader, providing innovative catch systems that are designed with fewer critical parts in the winch system, making them cheaper to install and operate. The systems are backed by our worldwide After Sales & Service network.



## LIST OF COMPONENTS

- ▶▶ ODIM Control System
- ▶▶ Frequency Converters
- ▶▶ iSpool Frequency Controlled Spooling Device
- ▶▶ Sweep Line Winches
- ▶▶ Trawl Winches
- ▶▶ Gilson Winches
- ▶▶ Net Drum Winches
- ▶▶ Net Sound Winches
- ▶▶ Cod End Winches
- ▶▶ Outhaul Winches
- ▶▶ Auxiliary Winches
- ▶▶ ODIM ABAS™ Cranes

### A TRAWL WINCHES

- ▶▶ The lightweight and compact ODIM electric trawl winches eliminate the possibility of downtime due to consequential damages. They are fuel efficient – and even regenerate power back to the ship's net every time the wire goes out.

### B ODIM CONTROL SYSTEM

- ▶▶ The ISYM mode system allows operators to choose a variety of control modes for different fishing conditions. By operating in ISYM mode, capture volumes can be maximised and gear damage reduced.

### C ISPOOL FREQUENCY CONTROLLED SPOOLING DEVICE

- ▶▶ The high-efficiency spooling device is computer controlled, for exact spooling. It increases the lifetime of the wire and reduces spooling time for new wire.

# do more, with fewer resources

**#1 Reduced costs.** Cost control is crucial in today's competitive business environment. ODIM's frequency controlled, AC-driven catch systems for deep sea fishing are cheaper to install, maintain and operate.

**#2 Safer operations.** Consumers and the food industry want food produced with minimal environmental impact. Our electric driven catch systems eliminate the risk of spillage and pollution from hydraulic fluids. They also operate silently, which removes the risk of hearing damage for crew.

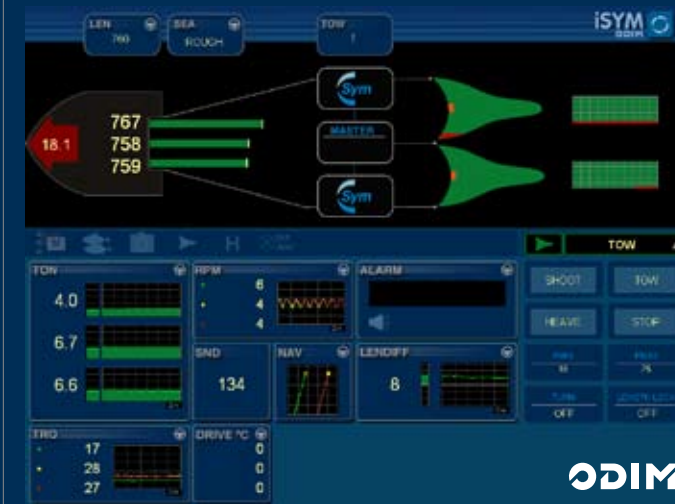
**#3 Use less resources.** Uptime is an important factor in the efficiency of your business. ODIM's electric driven systems maximise uptime, keeping your vessels productive. With their efficient design, they also help you cut energy usage and CO<sub>2</sub> emissions.

## A satisfied customer

"We have used ODIM's catch systems on our vessel, "Atlantic Enterprise", since 2002. In that time, the systems have reduced our annual fuel consumption by 500 000 litres. The electric winches give us more uptime and require less maintenance than our previous hydraulic winches. They have also increased the lifespan of the wire by 50 percent."

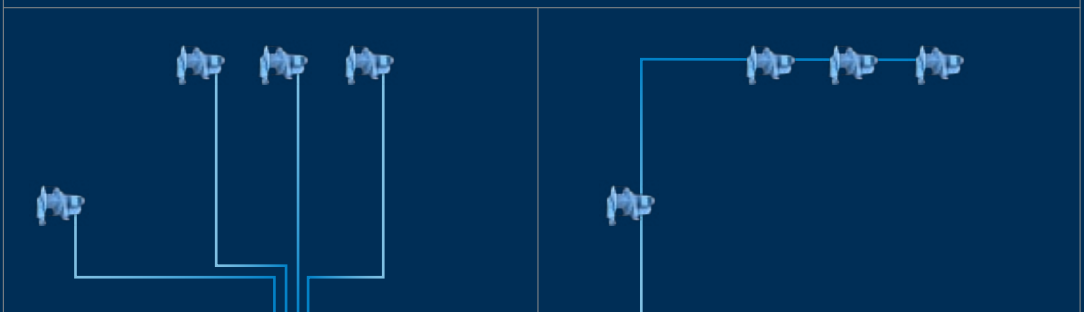
- Per Svernigsen, Technical Director, Ocean Prawns

## Centrally controlled trawl system



» Our winch solutions are managed through an ODIM/Scantrol control system. This optimises the operations of the various components of the trawl system and minimises energy usage.

## Electric-driven winches provide more uptime



**A** » Electric winch system

**B** » Hydraulic winch system

Unlike hydraulic winches, electric-driven winches are independent of each other, so the others remain online if one of them fails



ODIM ASA  
P.O. BOX 193  
NO-6069 Hareid  
Norway  
Phone: +47 70 01 33 00  
www.odim.com

E-mail: [office@odim.com](mailto:office@odim.com)  
Fax: + 47 70 01 33 01

Concept, text & design: Crauna  
Illustrations: Hugeljeller  
Foto: Gettyimages.com

